

# Hales Corners Fire Department



## 2013 Annual Report

# Table of Contents

Letter from the Fire Chief.....	3
2013 Police and Fire Commissioners and Board of Trustees.....	4
Hales Corners Fire Department Organizational Chart.....	5
Personnel Roster with Years of Service.....	6
Retirements and Resignations.....	7
Budget.....	8
Five Year Run Volume Comparison.....	9
Incident Types .....	10
Incidents by Alarm Time.....	12
Number of Calls by Hour and Month .....	13
Mutual Aid Alarms.....	14
EMS Summary.....	15
Calls by Age and Transport Destination.....	16
Fire Inspection and Code Enforcement.....	17
Plan Review.....	17
Fire Prevention and Public Education.....	18
Training and Education .....	20
Training and Educational Hours.....	22
Fleet Inventory.....	25
Firefighter Creed.....	26

Honorable Village President  
Board of Trustees  
Members of the Police and Fire Commission  
Village Administrator

On behalf of the men and women of the Hales Corners Fire Department, it is my pleasure to present the 2013 Hales Corners Fire Department Annual Report.

The economic downturn and other influences have presented staffing challenges for Paid on Call (POC) fire departments like The Hales Corners Fire Department. Fire Departments have historically been able to recruit POC personnel to respond to the station for emergency responses. Paid on-call and volunteers are diminishing nationwide.

The fire department has extensively recruited to maintain our full Paid-on-Call (POC) compliment of firefighter/EMTs for the last several years. We thank those who responded and serve. But, the cumulative response has been insufficient to recruit and retain for the future. As a result, the Village Board has approved the part-time staffing initiative for the fire department. This staffing initiative starting July 1, 2013 will provide additional part-time staff to have four (4) firefighter/EMTs in the station twenty-four hours a day, seven days a week, allowing the department to respond immediately to multiple ambulance requests or an immediate response to a fire call. Utilizing part-time firefighter/EMTs will provide the Village staffing in the station while keeping costs to a minimum.

For the six (6) months of part-time staffing response times (time of call, to time on scene) have been REUCED by HALF. The average ambulance response is now 4 minutes, and an average engine response is 4 ½ minutes.

Fire department training hours have significantly increased. In 2012 the department completed 5,017 hours of training hours. This was done primarily in two hour sessions on Monday nights and Tuesday mornings for the entire department. Since July 1, 2013, personnel are trained on shift and receive training every day. For the six (6) months of part-time staffing training hours were increased by 2,612 hours for a total of 7,629 training hours in 2013.

The Hales Corners Fire Department, through its highly trained and dedicated employees, strives to deliver the highest quality fire protection and emergency medical services in the most cost effective manner through quality fire prevention, suppression, and emergency medical services delivery, with the utmost regard for the safety of its citizens, visitors and employees. We are very grateful for the continued support from our community, village administration, other village departments, and elected officials; without your support, meeting our mission would not be possible.

Respectfully Submitted



Fire Chief Michael A. Jankowski, B.S., EFO, CFO

## **2013 Police and Fire Commissioners**

Karen Geiger

James Gilboy

Sandy Sannes

Thomas Sobocinski

Ian Thompson

Mary Bennett – Village Board of Trustees Liaison

## **2013 Board of Trustees**

Robert G. Ruesch – President

Mary Bennett – Trustee

Joe Mesec – Trustee

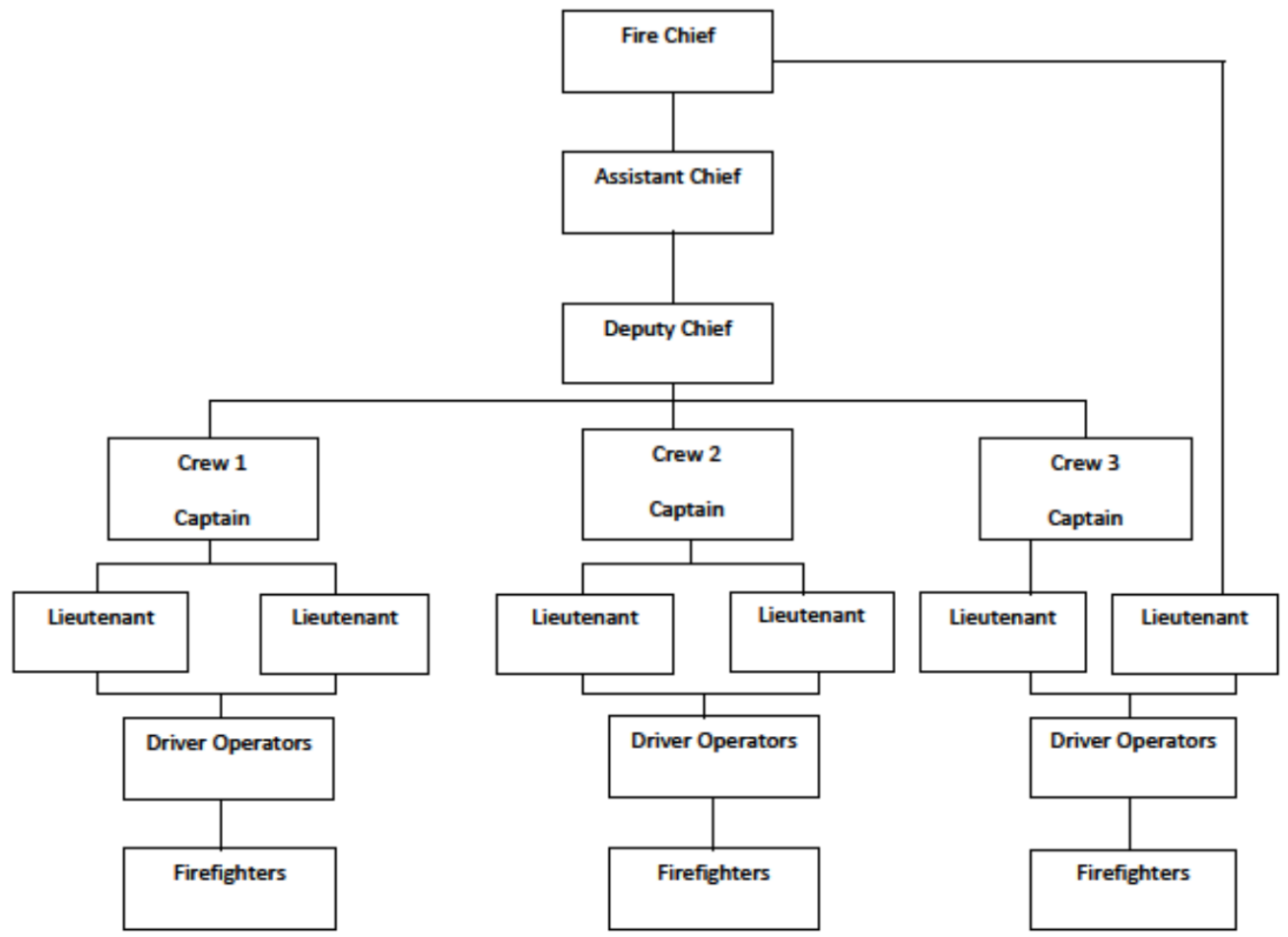
Marjorie Stahl – Trustee

Don Schwartz – Trustee

Dan Besson – Trustee

Linda Teschendorf - Trustee

**Hales Corners Fire Department  
Organizational Chart**



## Hales Corners Fire Department 2013 Personnel Roster

<b>Name</b>	<b>Rank</b>	<b>Hire Date</b>	<b>Years of Service</b>
Michael A. Jankowski	Fire Chief	01/07/07	7
Peter R. Jaskulski	Assistant Chief	04/27/81	33
Martin E. Freibergs	Deputy Chief	08/03/91	23
Roy T. Stollenwerk	Captain	11/01/83	31
Phillip F. Pratt	Captain	09/18/00	14
Roger W. Lohr	Captain	07/13/98	16
Nicholas J. Schreiber	Lieutenant	06/26/06	8
Paul D. Sporleder	Lieutenant	10/07/02	12
Steven E. Coyne	Lieutenant	07/08/02	12
Wes V. Guajardo	Lieutenant	01/30/06	8
David J. Vander Molen	Lieutenant	07/10/06	8
Paul Topczewski	Driver Operator	05/04/87	27
Daniel D. Rickert	Driver Operator	06/11/88	26
Eric R. Saidler	Driver Operator	04/10/06	8
Bryan E. Nash	Driver Operator	09/20/04	10
David Friesema	Driver Operator	01/14/08	6
Shawn P. Ganser	Driver Operator	01/14/2008	6
Robert A. Sackett	Driver Operator	05/11/09	5
Troy Dornack	Acting Driver Operator	01/07/2011	4
Adam Bucher	Acting Driver Operator	01/07/11	4
Joseph Wishmann	Acting Driver Operator	01/07/11	4
Jeremy Fronczak	Acting Driver Operator	12/01/11	3
Christopher Birmingham	Acting Driver Operator	12/01/11	3
Adam Hadley	Acting Driver Operator	07/09/2012	2
Andrew Eigenberger	Acting Driver Operator	07/09/2012	2
Joanne M. Chenery	EMT	11/14/05	9
Lori Coyne	EMT	12/12/05	9
Heather A. Conway	Firefighter	07/10/06	8
James Hughes	Firefighter – only	01/08/07	8
Matthew E. Napreilla	Firefighter	05/11/09	5
James J. Spranger	Firefighter	05/11/09	5
Alex Eversum	Firefighter	01/07/11	4
Alex Samosky	Firefighter	01/07/11	4

## Hales Corners Fire Department 2013 Personnel Roster

<b>Name</b>	<b>Rank</b>	<b>Hire Date</b>	<b>Years of Service</b>
Zachary Menden	Firefighter	07/09/2012	2
Gary Herkert	Firefighter	02/18/2013	1
Kory Wendt	Firefighter	02/08/2013	1
Andrew Matias	Firefighter	02/08/2013	1
Cory McNamara	Firefighter	02/08/2013	1
Sarah Kastern	Firefighter	02/08/2013	1
Jamie Roeder	Firefighter	02/08/2013	1
Eric Licht	Firefighter	07/02/2013	1
Justin Przeracki	Firefighter	07/02/2013	1
Jason Watts	Firefighter	07/02/2013	1
Daniel Voltner	Firefighter	07/02/2013	1
Mark Witt	Firefighter	07/02/2013	1
Jacob Charney	Firefighter	10/27/2013	1
Collin Bertram	Firefighter	10/27/2013	1
Mark Sheremeta	Firefighter	10/27/2013	1
Benjamin Reuteler	Firefighter	10/27/2013	1
Hailey Butow	Firefighter	10/27/2013	1
Noemi Barinaga	Firefighter	10/27/2013	1

### Retirements and Resignations

<b>Name</b>	<b>Rank</b>	<b>Hire Date</b>	<b>Resignation- Retirement Date</b>	<b>Years of Service</b>
Adam J. Kooi	Driver Operator	05/11/09	07/01/2013	4
Octavio J. Villarreal	Firefighter	08/03/2009	03/24/2013	4
James Davis	Firefighter	07/09/12	09/03/2013	1

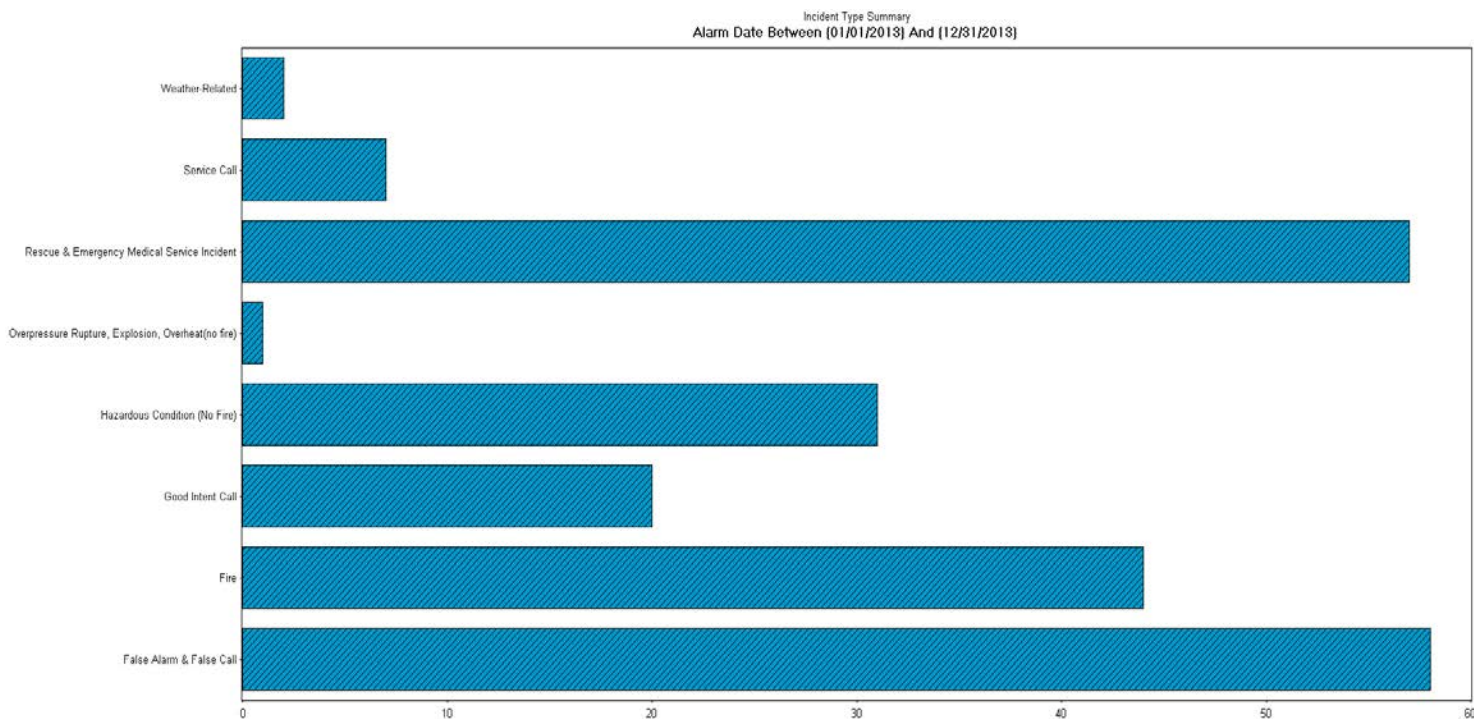
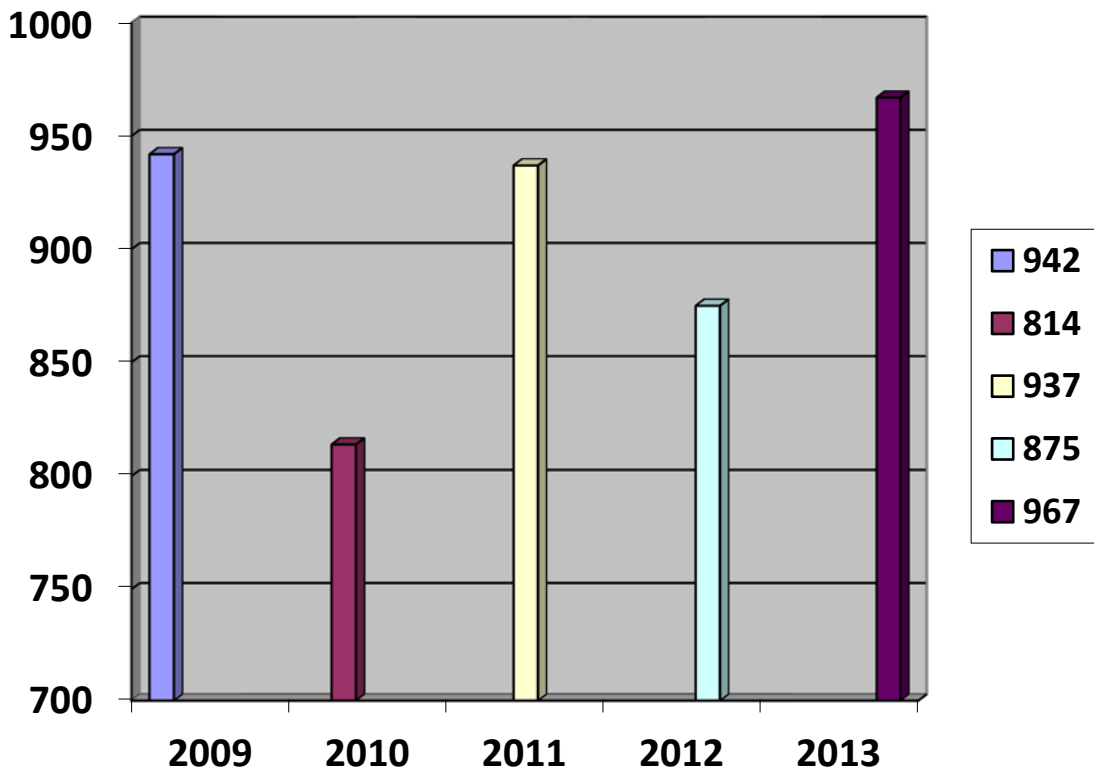
## 2013 Budget

<b>Account</b>	<b>2013 Budget</b>	<b>Expenditures</b>
Postage	550.00	492.17
Office Supplies	1,900.00	1064.32
Fuels/Lubricants	12,000.00	13,545.86
Equipment Repairs	20,000.00	18734.46
New Equip/Tools	4,000.00	1,315.51
Telephone	5,000.00	3,975.67
Dues/Publications	2,500.00	1,545
Conf/Training	6,000.00	6476.81
Auto Allowance	100.00	0.00
Utilities	21,000.00	22643.48
Building Maintenance	6,000.00	7623.75
Radio Comm Repair/Maint.	6,000.00	4369.44
Contr Serv Programming	3,700.00	4054.33
Contr Serv Medical	7,000.00	9070.50
Contr Serv Amb Billing	12,500.00	16040.04
Medical Supplies	9,100.00	9254.41
Fire Equipment Supplies	7,000.00	479.40
Photo Copier	200.00	271.24
Computer Maintenance Supply	3,250.00	2148.14
Building Maint. –Projects	2,000	2,000
P&F Comm – Recruitment	1,500.00	509.26
Transfer to Equip Replacement	19,000.00	19000.00
Hazardous Materials Program	3,600.00	2279.37
Unclassified	1,500.00	111.12
Salaries - Permanent	194,206.00	187554.97
Salaries - Temporary	305,000.00	327812.36
Holiday Pay	8,023.00	8153.39
Sick Pay	0.00	4352.68
Vacation Pay	12,605.00	14829.45
FICA	39,798.00	40528.18
WRS	31,606.00	3267.83
Life/STD	1,200.00	777.99
Health/Dental	71,000.00	78018.96
Uniform	11,000.00	9565.29
WRS Equalization	9,500.00	4153.74
Employee Recognition	2,250.00	2,250.00
<b>Total</b>	<b>843,588</b>	<b>955,792.56</b>

<b>Revenue</b>	<b>2013 Budgeted</b>	<b>Amt. Received</b>
2% Dues Reimbursement	22,750.00	22,381.31
Highway Response Fees	25,000.00	21,150.00
Inspection Fees	18,000.00	16,645.00
Ambulance Fees	194,000.00	177,766.54
<b>Total</b>	<b>259,750.00</b>	<b>237,942.85</b>



# 5 Year Total Run Volume Comparison



Hales Corners

Village Incident Type Report - In Village

Alarm Date Between {01/01/2013} And {12/31/2013}  
and District <> "10 "

Incident Type	Count	Pct of Incidents	Total Est Loss	Pct of Losses
<b>1 Fire</b>				
111 Building fire	2	1.06%	\$3,500	5.49%
113 Cooking fire, confined to container	13	6.91%	\$1,550	2.43%
114 Chimney or flue fire, confined to chimney	1	0.53%	\$10,000	15.71%
131 Passenger vehicle fire	7	3.72%	\$30,500	47.91%
142 Brush or brush-and-grass mixture fire	1	0.53%	\$0	0.00%
162 Outside equipment fire	1	0.53%	\$0	0.00%
	<b>25</b>	<b>13.29%</b>	<b>\$45,550</b>	<b>71.56%</b>
<b>2 Overpressure Rupture, Explosion, Overheat(no fire)</b>				
243 Fireworks explosion (no fire)	1	0.53%	\$0	0.00%
	<b>1</b>	<b>0.53%</b>	<b>\$0</b>	<b>0.00%</b>
<b>3 Rescue &amp; Emergency Medical Service Incident</b>				
322 Motor vehicle accident with injuries	44	23.40%	\$15,000	23.56%
323 Motor vehicle/pedestrian accident (MV Ped)	3	1.59%	\$0	0.00%
324 Motor Vehicle Accident with no injuries	8	4.25%	\$0	0.00%
353 Removal of victim(s) from stalled elevator	1	0.53%	\$0	0.00%
	<b>56</b>	<b>29.78%</b>	<b>\$15,000</b>	<b>23.56%</b>
<b>4 Hazardous Condition (No Fire)</b>				
411 Gasoline or other flammable liquid spill	2	1.06%	\$0	0.00%
412 Gas leak (natural gas or LPG)	5	2.65%	\$0	0.00%
413 Oil or other combustible liquid spill	2	1.06%	\$0	0.00%
424 Carbon monoxide incident	4	2.12%	\$0	0.00%
442 Overheated motor	1	0.53%	\$0	0.00%
443 Breakdown of light ballast	2	1.06%	\$0	0.00%
444 Power line down	4	2.12%	\$0	0.00%
445 Arcing, shorted electrical equipment	5	2.65%	\$0	0.00%
463 Vehicle accident, general cleanup	5	2.65%	\$0	0.00%
	<b>30</b>	<b>15.95%</b>	<b>\$0</b>	<b>0.00%</b>
<b>5 Service Call</b>				
522 Water or steam leak	3	1.59%	\$0	0.00%
531 Smoke or odor removal	1	0.53%	\$0	0.00%
555 Defective elevator, no occupants	1	0.53%	\$0	0.00%

Hales Corners

Village Incident Type Report - In Village

Alarm Date Between {01/01/2013} And {12/31/2013}  
and District <> "10 "

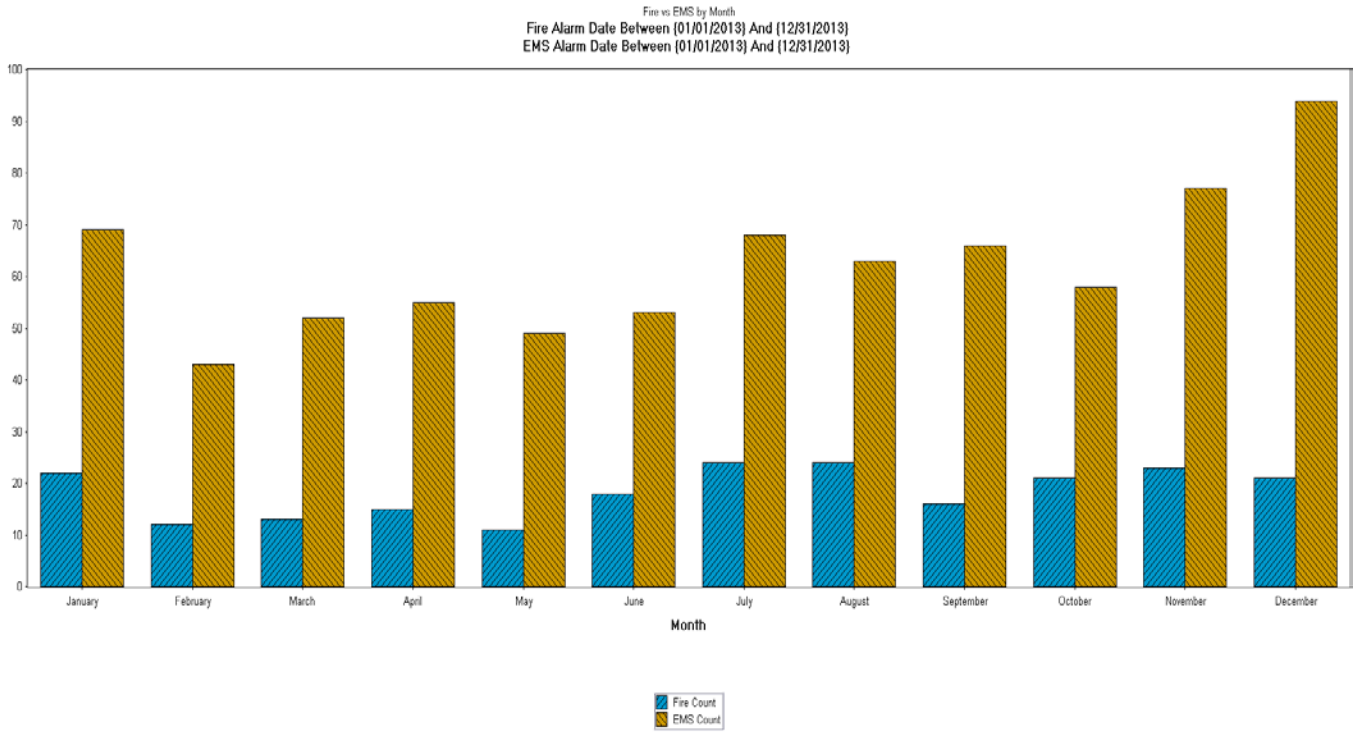
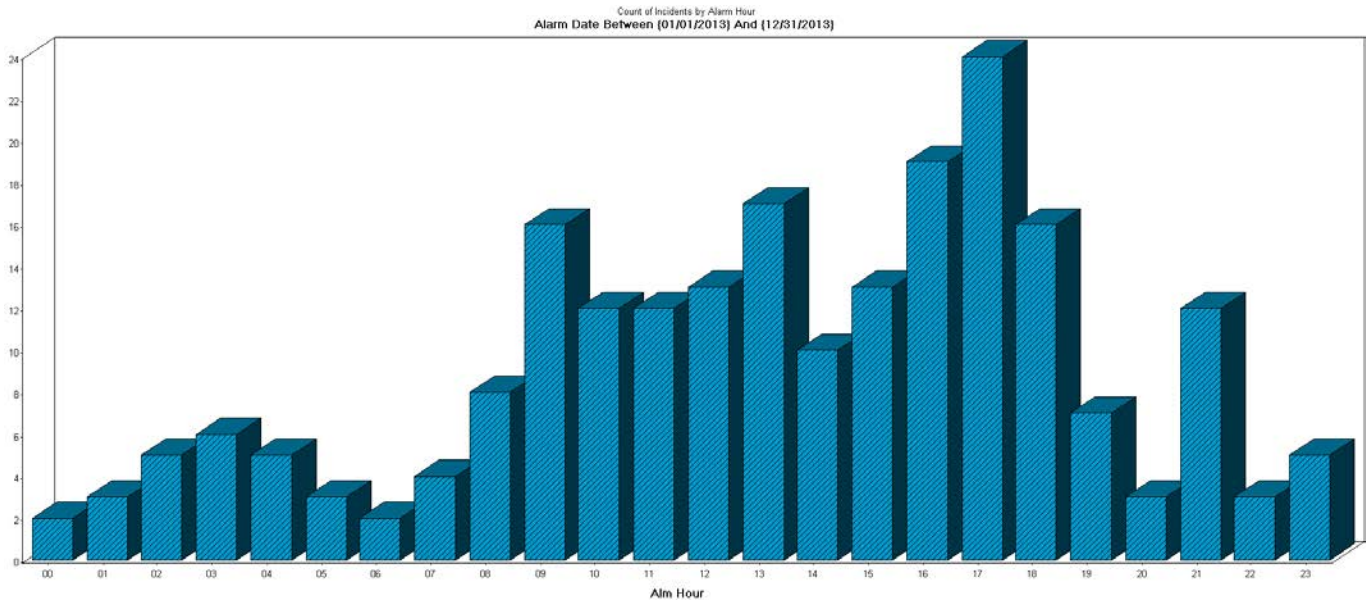
Incident Type	Count	Pct of Incidents	Total Est Loss	Pct of Losses
<b>5 Service Call</b>				
	5	2.65%	\$0	0.00%
<b>6 Good Intent Call</b>				
611 Dispatched & cancelled en route	4	2.12%	\$0	0.00%
6112 Inadvertant CAD creation	3	1.59%	\$0	0.00%
622 No Incident found on arrival at dispatch	1	0.53%	\$0	0.00%
631 Authorized controlled burning	1	0.53%	\$0	0.00%
652 Steam, vapor, fog or dust thought to be	1	0.53%	\$0	0.00%
671 HazMat release investigation w/no HazMat	1	0.53%	\$0	0.00%
	11	5.85%	\$0	0.00%
<b>7 False Alarm &amp; False Call</b>				
714 Central station, malicious false alarm	1	0.53%	\$0	0.00%
731 Sprinkler activation due to malfunction	1	0.53%	\$0	0.00%
733 Smoke detector activation due to	1	0.53%	\$0	0.00%
735 Alarm system sounded due to malfunction	3	1.59%	\$0	0.00%
736 CO detector activation due to malfunction	7	3.72%	\$0	0.00%
741 Sprinkler activation, no fire -	1	0.53%	\$3,100	4.87%
743 Smoke detector activation, no fire -	8	4.25%	\$0	0.00%
744 Detector activation, no fire -	11	5.85%	\$0	0.00%
745 Alarm system activation, no fire -	22	11.70%	\$0	0.00%
746 Carbon monoxide detector activation, no CO	3	1.59%	\$0	0.00%
	58	30.85%	\$3,100	4.87%
<b>8 Severe Weather &amp; Natural Disaster</b>				
814 Lightning strike (no fire)	2	1.06%	\$0	0.00%
	2	1.06%	\$0	0.00%
<b>Total Incident Count: 188</b>			<b>Total Est Loss: \$63,650</b>	

Hales Corners

Alarm Time Analysis

Alarm Date Between {01/01/2013} And {12/31/2013}

Alarm Hour	Count	Percent
00:00	2	0.90%
01:00	3	1.36%
02:00	5	2.27%
03:00	6	2.72%
04:00	5	2.27%
05:00	3	1.36%
06:00	2	0.90%
07:00	4	1.81%
08:00	8	3.63%
09:00	16	7.27%
10:00	12	5.45%
11:00	12	5.45%
12:00	13	5.90%
13:00	17	7.72%
14:00	10	4.54%
15:00	13	5.90%
16:00	19	8.63%
17:00	24	10.90%
18:00	16	7.27%
19:00	7	3.18%
20:00	3	1.36%
21:00	12	5.45%
22:00	3	1.36%
23:00	5	2.27%



Hales Corners

Incident Type Report (Summary) - Mutual Aid

Alarm Date Between {01/01/2013} And  
{12/31/2013} and District = "10 "

Incident Type	Count	Pct of Incidents	Total Est Loss	Pct of Losses
<b>1 Fire</b>				
111 Building fire	15	46.88%	\$0	0.00%
113 Cooking fire, confined to container	1	3.13%	\$0	0.00%
114 Chimney or flue fire, confined to chimney or flue	1	3.13%	\$0	0.00%
131 Passenger vehicle fire	2	6.25%	\$5,000	100.00%
	<b>19</b>	<b>59.38%</b>	<b>\$5,000</b>	<b>100.00%</b>
<b>3 Rescue &amp; Emergency Medical Service Incident</b>				
322 Motor vehicle accident with injuries	1	3.13%	\$0	0.00%
	<b>1</b>	<b>3.13%</b>	<b>\$0</b>	<b>0.00%</b>
<b>4 Hazardous Condition (No Fire)</b>				
412 Gas leak (natural gas or LPG)	1	3.13%	\$0	0.00%
	<b>1</b>	<b>3.13%</b>	<b>\$0</b>	<b>0.00%</b>
<b>5 Service Call</b>				
571 Cover assignment, standby, moveup	2	6.25%	\$0	0.00%
	<b>2</b>	<b>6.25%</b>	<b>\$0</b>	<b>0.00%</b>
<b>6 Good Intent Call</b>				
611 Dispatched & cancelled en route	7	21.88%	\$0	0.00%
631 Authorized controlled burning	1	3.13%	\$0	0.00%
651 Smoke scare, odor of smoke	1	3.13%	\$0	0.00%
	<b>9</b>	<b>28.13%</b>	<b>\$0</b>	<b>0.00%</b>
<b>Total Incident Count</b>	<b>32</b>		<b>Total Est Loss: \$5,000</b>	

## Emergency Medical Services

### PFC Monthly EMS Report

	Jan	Feb	Mar	Apr	May	Jun	Jul	Aug	Sept	Oct	Nov	Dec	Totals
<b>Village EMS Responses</b>	75	41	60	53	49	52	72	63	68	57	79	93	762
<b>EMS Mutual Aid Given</b>	1	3	2	3	4	6	5	8	3	4	4	7	50
<b>EMS Mutual Aid Rcvd - 10046</b>													
<i>BLS Responses</i>	0	0	0	0	0	0	0	0	0	0	0	1	1
<i>BLS Transports</i>	0	0	0	0	0	0	0	0	0	0	0	0	0
<b>EMS Mutual Aid Rcvd - 10047</b>													
<i>BLS Responses</i>	0	0	0	0	0	1	0	0	0	0	0	0	1
<i>BLS Transports</i>	0	0	0	0	0	0	0	0	0	0	0	0	0
<b>EMS Mutual Aid Rcvd - Franklin Fire Department</b>													
<i>BLS Responses</i>	0	1	1	3	2	0	0	0	1	1	2	1	12
<i>BLS Transports</i>	0	0	0	1	1	0	0	0	1	0	0	1	4
<b>EMS Mutual Aid Rcvd - Franklin Paramedic Unit</b>													
<i>ALS Responses</i>	3	5	7	1	11	5	5	12	8	8	5	6	76
<i>ALS Transports</i>	2	2	4	0	8	4	5	7	6	6	4	5	53
<b>EMS Mutual Aid Rcvd - Greendale Fire Department</b>													
<i>BLS Responses</i>	0	0	3	0	0	0	0	0	0	0	0	0	3
<i>BLS Transports</i>	0	0	1	0	0	0	0	0	0	0	0	0	1
<b>EMS Mutual Aid Rcvd - Greenfield Fire Department</b>													
<i>BLS Responses</i>	0	1	1	0	0	0	0	0	0	0	0	0	2
<i>BLS Transports</i>	0	1	1	0	0	0	0	0	0	0	0	0	2
<b>EMS Mutual Aid Rcvd - Greenfield Paramedic Unit</b>													
<i>ALS Responses</i>	1	0	0	1	0	0	1	0	0	0	0	1	4
<i>ALS Transports</i>	1	0	0	1	0	0	1	0	0	0	0	0	3
<b>EMS Mutual Aid Rcvd - New Berlin Fire Department</b>													
<i>BLS Responses</i>	0	0	3	0	0	0	0	0	0	0	0	0	3
<i>BLS Transports</i>	0	0	1	0	0	0	0	0	0	0	0	0	1
<b>EMS Mutual Aid Rcvd - Other Police Department</b>													
<i>BLS Responses</i>	0	0	0	0	0	0	0	0	0	1	0	0	1
<i>BLS Transports</i>	0	0	0	0	0	0	0	0	0	0	0	0	0
<b>ILS Transports</b>	15	9	14	13	7	10	6	8	5	8	14	13	122
<b>BLS Transports</b>	32	14	22	22	21	19	26	21	34	18	36	31	296

Page 1 of 2

### PFC Monthly EMS Report

	Jan	Feb	Mar	Apr	May	Jun	Jul	Aug	Sept	Oct	Nov	Dec
<b>HCFD BLS &amp; ILS Transports</b>	47	23	36	35	28	29	32	29	39	26	50	44
<b>Paramedic Transports</b>	10	8	5	4	11	9	17	13	13	14	9	15
<b>No Transport Required</b>	18	13	21	17	14	20	28	29	19	21	24	41





**Average Patient Age by Gender**  
**From 01/01/13 To 12/31/13**  
**Report Printed On: 07/28/2014**

Patient Age Range	Male		Female		Other		Total	
	#	%	#	%	#	%	#	%
< 1	2	0.64%	1	0.21%	0	0.00%	3	0.38%
1 - 10	9	2.89%	4	0.85%	0	0.00%	13	1.66%
11 - 20	8	2.57%	12	2.55%	0	0.00%	20	2.56%
21 - 30	29	9.32%	23	4.88%	0	0.00%	52	6.65%
31 - 40	23	7.40%	34	7.22%	0	0.00%	57	7.29%
41 - 50	23	7.40%	23	4.88%	0	0.00%	46	5.88%
51 - 60	44	14.15%	39	8.28%	0	0.00%	83	10.61%
61 - 70	37	11.90%	55	11.68%	0	0.00%	92	11.76%
71 - 80	39	12.54%	58	12.31%	0	0.00%	97	12.40%
81 - 90	67	21.54%	126	26.75%	0	0.00%	193	24.68%
91 - 100	30	9.65%	94	19.96%	0	0.00%	124	15.86%
> 100	0	0.00%	2	0.42%	0	0.00%	2	0.26%
<b>Total</b>	<b>311</b>		<b>471</b>		<b>0</b>		<b>782</b>	<b>100%</b>



**Transported by Destination Report**  
**From 01/01/13 To 12/31/13**

Destination	# of Runs	% of Runs
AURORA SINAI MEDICAL CENTER	3	0.38%
CLEMENT J ZABLOCKI VA MEDICAL CENTER	3	0.38%
COLUMBIA HOSPITAL	1	0.13%
FROEDTERT MEMORIAL HOSPITAL	80	10.01%
MILW COUNTY MENTAL HEALTH COMPLEX	1	0.13%
MILWAUKEE CHILDRENS HOSPITAL	11	1.38%
MILWAUKEE COUNTY MEDICAL EXAMINER	3	0.38%
NON-TRANSPORT	218	27.28%
NOT APPLICABLE	32	4.01%
Not Available	1	0.13%
ST FRANCIS HOSPITAL -MKE	42	5.26%
ST JOSEPH PROFESSIONAL BLDG ON 51ST	1	0.13%
ST LUKE'S HOSPITAL & MEDICAL CENTER - MKE	167	20.90%
ST LUKES FRANKLIN HEALTH CARE	1	0.13%
ST MARY'S HOSP OF MILWAUKEE	2	0.25%
THE WISCONSIN HEART HOSPITAL	3	0.38%
WAUKESHA MEMORIAL HOSPITAL	3	0.38%
WEST ALLIS MEMORIAL HOSPITAL	167	20.90%
WHEATON FRANCISCAN HEALTHCARE - FRANKLIN	53	6.63%
No Destination	7	0.88%
<b>Total</b>	<b>799</b>	<b>100%</b>



## Fire Inspection and Code Enforcement

The Fire Inspection Bureau of the Hales Corners Fire Department is a vital part of Life/Safety, Fire/Safety, and Fire/Prevention. Our number one goal is to protect our citizens, all people working in Hales Corners, our Firefighters and Rescue personnel and all structures built in our village. Some of the ways we do this is thru education, in our schools, and in the work place. Another way is thru our fire code requiring the installation of a fire alarm system that includes devices like pull stations, horn/strobes, heat detectors, and smoke detectors that can detect a fire in its early stages. It is an actual fire the sprinkler system will allow for safe egress of the building, and keep the fire in check until the fire department arrives. These fire alarm systems are monitored, which means that the fire department will be notified early in the incident, preventing further property damage. With the fire alarm system sounding, evacuation of the building will be in progress upon fire department arrival. The Village of Hales Corners Fire Prevention, Protection and Control Code chapter 6 requires these live safety measures in most new multi-family, and commercial construction.

As you can see the Fire Inspection Bureau has a responsibility to help improve the quality of life safety thru better fire prevention in the Village of Hales Corners. In doing routine fire inspections we are able to identify unsafe conditions and deficiencies in buildings we inspect. With tools like our local fire code, State of Wisconsin Department Safety and Professional Services (DSPS) Codes, National Fire Protection Association (NFPA) Codes, and the International Building and Fire Code (IBC & IFB), we strive to provide a reliable means to reduce the loss of life and property in the Village of Hales Corners. Working together with businesses and multi-family buildings will help reduce violations, and have a safer environment for all.

### Plan Review

New developments and building construction are outlined below. The Hales Corners Fire Department worked with developers and other Village Departments to ensure that the best fire protection and detection systems were applied to these new public use buildings.

- ❖ Brew City Auction & Pawn
- ❖ Prime Printing (relocate)
- ❖ Dunkin Donuts
- ❖ Plum Tree Apartments Alarm Radio
- ❖ In Step Physical Therapy
- ❖ Entercom (99WMYX)



# Fire Prevention and Public Education

## History

The history of National Fire Prevention Week has its roots in the Great Chicago Fire, which occurred on October 8, 1871. This tragic conflagration killed some 300 people, left 100,000 homeless and destroyed more than 17,000 structures. The origin of the fire has generated speculation since its occurrence, with the fact and fiction becoming blurred over the years. One popular legend has it that Mrs. O'Leary was milking her cow when the animal kicked over a lamp, setting the O'Leary barn on fire and starting the spectacular blaze. However, the massive fire began; it swiftly took its toll, burning more than 2000 acres in 27 hours. The city of Chicago quickly rebuilt however, and within a couple of years, residents began celebrating their successful restoration and memorialized the anniversary of the fire with festivities.

Long overshadowed, the City of Peshtigo in northern Wisconsin suffered a greater tragedy that very same day suffering a loss of 2,400 square mile (1.5 million acres) along with an estimated 2,400 people who died compared with only 300 deaths in Chicago.

Intending to observe the fire's anniversary with a more serious commemoration, the Fire Marshals Association of North America (FMANA), the oldest membership section of the National Fire Protection Association (NFPA), decided that the 40th anniversary of the Great Chicago Fire should be observed not with festivities, but in a way that would keep the public informed about the importance of fire prevention.

When President Calvin Coolidge proclaimed the first National Fire Prevention Week, October 4 - 10 1925, he noted that in the previous year some 15,000 lives were lost to fire in the United States. Calling the loss "startling", President Coolidge's proclamation stated, "these waste results it is highly desirable that every effort be made to reform the conditions which have made possible so vast a destruction of the national wealth".

NFPA continues today to make National Fire Prevention Week a priority and counts on the participation and efforts of tens of thousands of fire and safety professionals, emergency volunteers, and other individuals working to reduce the risk of fire and the toll it takes on our society.



## Today

Equally important is the role of public education. Each year the Hales Corners Fire Department takes the message of fire prevention and home safety out to the community with various programs designed to educate all age groups.

Traditionally public education is viewed as the fire department visiting schools in October to teach the kids STOP-DROP-ROLL. While this is true, the Hales Corners Fire Department has defined public education programs to focus on various age groups.

October is our busiest time of year. In 2013, members of the fire department brought the message to over 1,900 children and 115 adults from pre-school through fifth grade. Our fire prevention is a tiered approach, which builds on the previous year's material presented at each grade level. This ensures that the children get to see something new every year while reinforcing what they have learned in the previous years. Our programs touch on:

- ✓ Seeing a firefighter dressed in his protective gear
- ✓ STOP-DROP-ROLL
- ✓ Crawling low in simulated smoke
- ✓ Having an escape plan
- ✓ Having a meeting place
- ✓ Checking smoke detectors
- ✓ Checking the home for fire hazards
- ✓ Survive Alive house for hands on practice

Schools are not our only focus for fire prevention and education. The Hales Corners Fire Department collaborates with Forest Ridge Apartments to deliver our fire prevention program, fall prevention program, and emergency medical program.

The fire prevention and education program also coordinates the presentation of our material at several outdoor events such as: Fourth of July events, National Night Out, Whitnall Homecoming Parade, and Delivering Santa Claus in addition to fire station tours and birthday parties. The Public Education events outside of the fire prevention program at the schools reach over 6,400 children and adults throughout the year. We strive to expand our interactive public programs in an effort to educate children and adults and to answer any questions they may have, while maintaining fiscal responsibility and working within budget.

As the Mission Statement for the Hales Corners Fire Department reads, 'it is through our members that we provide effective fire prevention'.



## **Training and Education - 2013**

**January-** Incident Command System and Motor Vehicle Crash (MVC) situational size up was completed by all staff. Hazardous Materials Awareness level material was reviewed in regards to the NFPA 704 Hazard Marking system and the new 2012 Emergency Response Guidebook. Firefighting techniques in gaining access to doorways, often referred to as forcible entry, was reviewed and introductory video programs were viewed to understand procedures.

**February-** Forcible Entry basics were reviewed and personnel spent many hours demonstrating their skill sets on a borrowed prop from the Milwaukee Area Technical College. In the EMS aspect, the overall EMS community is seeing an increase in combative patients; training obtained at the Wisconsin EMS Association program (WEMSA) assisted us in presenting EMS patient awareness and how to avoid these situations. Material was presented by Assistant Chief Pete Jaskulski (retired Milwaukee County Sheriff Deputy and current Law Enforcement instructor specializing in assessing scenes and de-escalating combative patient situations). The new recruit class of Probationary Firefighters began their training: Brad Gustowski, Gary Herkert, Kory Wendt, Andrew Matias, Sarah Kastern, Joe Hordyk, and Cory McNamara.

**March-** Blood Borne Pathogen training was completed for all staff members with a presentation from the Medical College of Wisconsin office of Occupational Services. Additional EMS training addressed optional splinting devices using the SAM splint device to provide our EMS staff with a more form fitting splint support component. A room marking tag system was implemented for firefighting operations that will be used throughout the MABAS Division 107 fire departments. Forcible Entry training was enhanced with demonstrations of adding the New York tool into the usable components that fire personnel may utilize. The NY tool works as a leverage multiplier along with the Halligan bar to overcome strong doors and latches.

**April-** Electronic Patient Care Reporting (EPCR) narrative reviews were presented to staff using the Milwaukee County EMS narrative tutorial program established by Lauryl Pukansky. This presentation will aid our staff in developing better EMS report narratives and supplement our EMS program as we perform Quality Assurance checks. The Forcible Entry training program was completed with advanced skill set proficiency demonstrations completed.

**May-** Technical Rescue – Awareness Level for Trench Operations was provided to all members as part of the continuous MABAS Division 107 team development. Driver Operator – Pumper training was completed for members who hold Wisconsin Technical College certification in preparation for the part time staffing rollout in July.

**June**-Training this month consisted of completing the transition from Paid-on-Call response to Part-Time staff response. Items reviewed in details included: new Standard Operating Guidelines, new response criteria, new riding assignments and daily assignments, vehicle check forms, along with administrative duties such as completing Fire response reports (NFIRS), initiating calls and data into our records management system Firehouse Software (FHS RMS). The EMS program completed training on a new cervical spine collar that speeds up use and selection while reducing inventory. Defibrillator use on cardiac related calls is now set up for us apply monitoring; daisy placement training was reviewed and completed, along with new EMT-Advanced jump kits for E601, E605, and Utility 620. Firefighter training addressed Engine Company extended hose layouts and water flow rates achieved with the use of a portable monitor (Blitzfire tool) versus a smooth bore nozzle and the responsibilities of the 2<sup>nd</sup> firefighter on the hose line.

**July**-The new recruit class of Probationary Firefighters began their training: Mark Witt, Jason Watts, Dan Voltner, Justin Przeracki, Eric Licht, and Nathan Elderbrook. Aerial Truck company operations were performed including climbing the aerial ladder, tool carries, ladder carries, and transitioning from the aerial ladder to roof top operations. Motor Vehicle Crash (MVC) response for EMS and Fire personnel was completed including: apparatus placement, scene size up, scene safety, vehicle stabilization, and patient packaging with specific applications to motorcyclist c-spine stabilization and helmet removal. July rounded out the training on forcible entry techniques by utilizing the forcible entry door prop that Greenfield FD owns and operates. This program was a final test of all the skill sets learned in forcible entry over the last 4 months.

**August**-Pre-incident planning training was completed with a dual focus of EMS and Fire response in specific target hazard locations. Staff spent time at various locations understanding fire related items such as: building construction, building age, access routes to the building / 360 degree size up, water supply, where to stage apparatus, where attack hose lines would go, where mutual aid fire response companies would park and operate.

**September**- Milwaukee County EMS and the Resuscitation Outcome Consortium (ROC) presented a study review of their program and progress in effective CPR; HCFD staff completed in house CPR training to increase awareness of effective CPR. Milwaukee County EMS completed our in-house EMT – Advanced refresher program to meet the 2014 license renewal criteria. Milwaukee County General Mitchell International Airport ran a mock airplane crash to test the response criteria; HCFD participated with an EMS crew. Franklin Fire Department has expanded their Dive Rescue operations and HCFD staff has been training alongside of FFD staff to understand equipment and procedures that their team operates with; the intent is for HCFD to support FFD Dive Rescue operations with manpower. The following Wisconsin Technical College System certification classes are being attended: Fire Inspector – Jacob Charney, Firefighter II – Mark Witt and Justin Przeracki, Driver Operator Pumper – Kory Wendt, Justin Przeracki, James Davis, Eric Licht, Cory McNamara, Driver Operator Aerial – Adam Bucher, Alex Eversum, Nathan Elderbrook, Zach

Menden, Joe Wishmann, EMT Advanced – Mark Witt, Dan Voltner, Cory McNamara, Andrew Matias, Eric Licht, and Sarah Kastern.

**October-** Water rescue response and operations were reviewed. The new recruit class of Probationary Firefighters began their training: Noemi Barinaga, Hailey Butow, Jacob Charney, Collin Bertram, Brett Frazier, Ben Reuteler, and Mark Sheremeta. Troy Dornack completed his Incident Command System 300 and 400 classes.

**November-** CPR refresher in Adult, Child, Infant techniques along with choking in all three capacities along with advanced airway management with the King LT device was performed as well.

**December-** Response to Carbon Monoxide alarms along with fire operations at chimney fires completed the year.



### **EVERYONE GOES HOME**

Recognizing the need to do more to prevent line-of-duty deaths in addition, injuries, the National Fallen Firefighters Foundation has launched a national initiative to bring prevention to the forefront.

<b>TRAINING TOPIC</b>	<b>2012</b>	<b>2013</b>
<b>Administrative</b>	<b>56.00</b>	<b>111.50</b>
<b>Administrative EMS</b>	<b>108.0</b>	<b>81.75</b>
<b>Administrative Fire</b>	<b>15.50</b>	<b>136.50</b>
<b>Administrative New Hire Orientation</b>	<b>573.0</b>	<b>1764.0</b>
<b>Probationary exam-EMT</b>	<b>15.0</b>	<b>4.0</b>
<b>Probationary exam –EMT Hospital Drive</b>	<b>0</b>	<b>25.50</b>
<b>Probationary exam-Fire</b>	<b>6.5</b>	<b>7.0</b>
<b>Administrative MSDS Safety Data Sheets</b>	<b>0</b>	
<b>Administrative - Public Education</b>	<b>11.0</b>	<b>3.50</b>
<b>Administrative Inspection / Prevention</b>	<b>90.0</b>	<b>11.0</b>
<b>Administrative Preplans, FDC's, Sprinklers</b>	<b>0</b>	<b>217.75</b>
<b>HIPAA</b>	<b>0</b>	
<b>Blood Borne Pathogens</b>	<b>0</b>	<b>27.0</b>
<b>Officer Development</b>	<b>16.0</b>	<b>47.0</b>
<b>NIMS/MABAS</b>	<b>80.50</b>	<b>68.0</b>
<b>Incident Management System (IC / Ops / etc)</b>	<b>80.50</b>	<b>80.50</b>

<b>Gear check</b>	<b>0</b>	
<b>Radios and communications</b>	<b>39.0</b>	<b>48.0</b>
<b>Map Book</b>	<b>8.0</b>	<b>6.0</b>
<b>Report Writing <i>FIRE</i> / Data Entry</b>	<b>0</b>	<b>43.0</b>
<b>Arson Investigation</b>	<b>0</b>	
<b>Confined space training(Awareness – Technician / Zone D)</b>	<b>8.0</b>	<b>9.0</b>
<b>Driver Training Aerial (608)</b>	<b>60.50</b>	<b>92.50</b>
<b>BLS Driver training (610,612)</b>	<b>2.0</b>	<b>37.50</b>
<b>Driver training pumper/engine (601, 605)</b>	<b>60.50</b>	<b>138.0</b>
<b>Driver training (604, 621, 620)</b>	<b>122.75</b>	<b>179.75</b>
<b>Driver Training EVO/map book</b>	<b>8.0</b>	
<b>Report Writing <i>EMS</i> / Data Entry</b>	<b>175.50</b>	<b>111.0</b>
<b>Medical, legal, ethical issues</b>	<b>0</b>	<b>44.0</b>
<b>Patient assessments (IV tech skills set)</b>	<b>133.0</b>	<b>27.50</b>
<b>Triage SALT / START</b>	<b>0</b>	<b>10.0</b>
<b>Flight for Life</b>	<b>0</b>	
<b>DNR</b>	<b>0</b>	
<b>EMS patient lifting/packaging/transport</b>	<b>25.0</b>	<b>27.50</b>
<b>EMS Substance abuse</b>	<b>0</b>	<b>29.0</b>
<b>EMS PI accident Engine Co operations</b>	<b>0</b>	
<b>EMS PI accident BLS operations</b>	<b>0</b>	
<b>EMS Behavioral emergencies / restraints</b>	<b>0</b>	<b>25.0</b>
<b>EMS AHA CPR class (Adult / Child / Infant)</b>	<b>227.50</b>	<b>153.50</b>
<b>EMT Basic refresher</b>	<b>121.0</b>	<b>51.0</b>
<b>EMT IV Tech class</b>	<b>565.25</b>	<b>775.0</b>
<b>EMT IV Tech refresher</b>	<b>54.50</b>	<b>752.0</b>
<b>EMT NIH study</b>	<b>0</b>	<b>26.0</b>
<b>EMT-Paramedic refresher</b>	<b>57.0</b>	<b>127.50</b>
<b>EMT Preceptor</b>	<b>0</b>	<b>21.25</b>
<b>EMS Weapons of Mass Destruction</b>	<b>0</b>	<b>17.0</b>
<b>Explorers</b>	<b>0</b>	<b>6.0</b>
<b>Engine Company Operations</b>	<b>0</b>	<b>16.0</b>
<b>Truck Company Operations</b>	<b>65.0</b>	<b>4.0</b>
<b>620 Command Post Operations</b>	<b>0</b>	<b>9.0</b>
<b>PPE / SCBA basics</b>	<b>265.0</b>	
<b>SCBA Air management</b>	<b>0</b>	
<b>Ropes and knots</b>	<b>15.50</b>	
<b>MAYDAY / RIT</b>	<b>70.</b>	
<b>Chimney Fires</b>	<b>0</b>	<b>33.0</b>
<b>Carbon Monoxide</b>	<b>0</b>	<b>4.0</b>
<b>Engine Company Forcible Entry</b>	<b>0</b>	<b>354.0</b>
<b>Engine Company Ladders</b>	<b>0</b>	
<b>Engine Company water supply operations</b>	<b>391.0</b>	<b>93.0</b>
<b>Engine Company hose layouts</b>	<b>317.50</b>	<b>164.0</b>
<b>Engine Company TIC</b>	<b>57.0</b>	
<b>Engine Company extrication operations</b>	<b>416.50</b>	<b>33.0</b>
<b>Truck Company Ventilation</b>	<b>0</b>	
<b>Truck Company Forcible entry</b>	<b>0</b>	
<b>Truck Company Ladders</b>	<b>0</b>	<b>8.0</b>
<b>Truck Company Roof Ladders</b>	<b>24.0</b>	
<b>Truck Company Aerial operations</b>	<b>0</b>	<b>54.0</b>

<b>Truck Company TIC / Search Rescue / VES</b>	<b>0</b>	
<b>Truck Company Positive / Negative ventilation</b>	<b>0</b>	
<b>Overhaul Operations</b>	<b>76.0</b>	
<b>Meters</b>	<b>0</b>	
<b>Power Saws</b>	<b>30.0</b>	
<b>Vacant dwelling live fire burns</b>	<b>24.0</b>	
<b>Vacant dwelling hose lines operations</b>	<b>0</b>	
<b>Vacant dwelling search and rescue</b>	<b>156.0</b>	
<b>Vacant dwelling ladders</b>	<b>42.50</b>	
<b>Vacant dwelling ventilation</b>	<b>171.0</b>	
<b>Vacant dwelling-RIT</b>	<b>54.0</b>	
<b>Fire training Milwaukee County/Zone D/Zone E</b>	<b>8.0</b>	<b>84.75</b>
<b>Fire training New Berlin</b>	<b>0</b>	
<b>Haz Mat training (awareness-technician)</b>	<b>22.0</b>	<b>78.50</b>
<b>Mass casualty drill</b>	<b>8.0</b>	
<b>NFPA 1 Code Seminar</b>	<b>8.0</b>	
<b>Seminar</b>	<b>125.0</b>	<b>106.0</b>
<b>Arson Association Conference</b>	<b>32.0</b>	
<b>Wisconsin EMS Association</b>	<b>0</b>	<b>43.0</b>
<b>WI Fire Inspectors conference</b>	<b>29.0</b>	<b>34.0</b>
<b>WI Fire Instructors conference</b>	<b>0</b>	
<b>WI State Firefighters Association conference</b>	<b>0</b>	
<b>FDIC Fire Dept Instructors Conference</b>	<b>29.0</b>	<b>74.0</b>
<b>Trench rescue training (awareness-technician)</b>	<b>0</b>	<b>4.0</b>
<b>Driver Operator Aerial</b>	<b>0</b>	<b>236.0</b>
<b>Driver Operator Pumper</b>	<b>62.0</b>	<b>428.0</b>
<b>EMS Instructor 1</b>	<b>0</b>	
<b>EMS Instructor 2</b>	<b>48.0</b>	
<b>Firefighter 1</b>	<b>90.25</b>	
<b>Firefighter 2</b>	<b>9.0</b>	<b>129.0</b>
<b>Fire Inspector</b>	<b>0</b>	<b>26.25</b>
<b>Flashover simulator</b>	<b>0</b>	
<b>Fire Officer 1</b>	<b>0</b>	<b>80.0</b>
<b>Fire Officer 2</b>	<b>0</b>	
<b>Fire Instructor</b>	<b>56.0</b>	<b>45.50</b>
<b>Incident Safety Officer – National Fire Academy</b>	<b>0</b>	
<b>Water rescue</b>	<b>127.25</b>	<b>155.75</b>
<b>TOTAL HOURS</b>	<b>5548</b>	<b>7638.75</b>

**2012 Training hours represents a 2% increase over 2011 training hours  
2013 Training hours represents a 38% increase over 2012 training hours**



## Hales Corners Fire Department Fleet Inventory

One of the most frequent compliments paid to members of our department is the extremely clean and well-kept appearance of both our apparatus and the fire station. Visitors are often impressed at the condition of our apparatus and are impressed to learn the high level and length of use. The fact is members of our department take great pride in taking care of both the apparatus and the station and respect the fact that we proudly take on the task of maintaining the equipment that belongs to the citizens of Hales Corners.

ID #	Years of Service	Year and Vehicle Type	Model and Manufacture	Condition	Anticipated Replacement Date
601	7	2006 - Pumper	Seagrave Concord	Good	2036
604	9	2005 - Utility	Chevy Silverado	Good	2015
605	16	1998 - Pumper	Pierce Saber	Good	2028
608	23	1990 - Quint	Seagrave Friendship 75	Fair	2020
609	1	2013 - Car	Chevy Equinox	Excellent	2023
610	12	2002 - Ambulance	Ford / Horton	Fair	2015
612	4	2009 - Ambulance	Ford / Medtec	Excellent	2020
620	8	2005 - Command	Chevy Van	Good	TBD
621	7	2006 - Car	Chevy Impala	Good	2018

Engine Company 605



# *The Fire Fighter's Creed*



When I am called to duty, God  
wherever flames may rage  
give me strength to save a life  
whatever be its age

Help me to embrace a little child  
before it is too late  
or save an older person from  
the horror of that fate

Enable me to be alert  
to hear the weakest shout  
and quickly and efficiently  
to put the fire out

I want to fill my calling and  
to give the best in me  
to guard my neighbor and  
protect his property

Moreover, if according to your will  
I have to lose my life  
bless with your protecting hand  
my children and my wife

*This page is dedicated to the memory of all the fallen firefighters  
who have made the ultimate sacrifice in the line of duty*